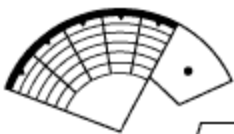
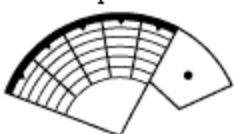
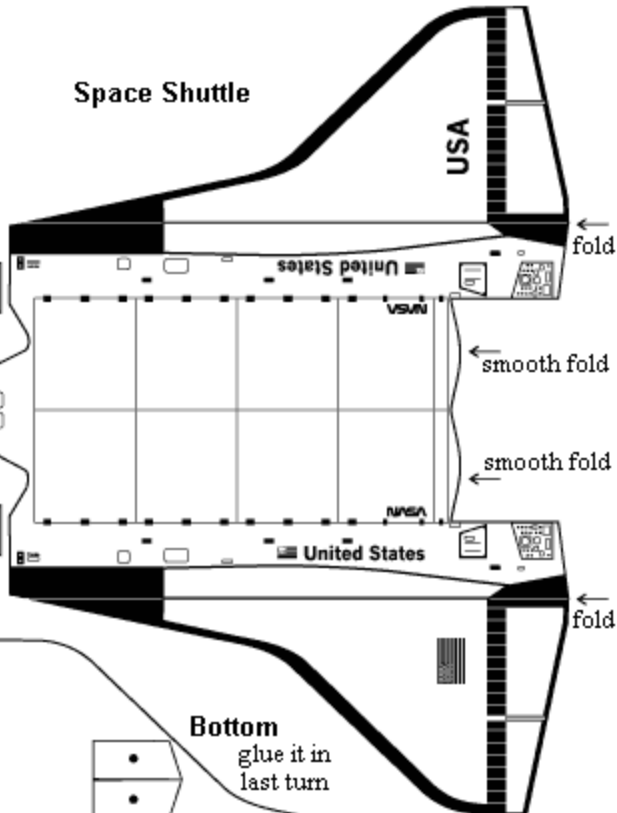




fold it up as a cone



# Space Shuttle



USA

United States

VSN

NASA

United States

smooth fold

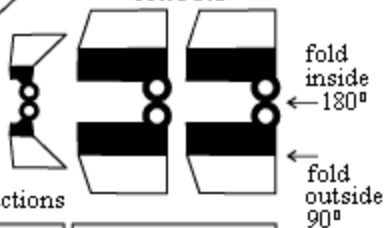
smooth fold

## Bottom

glue it in last turn



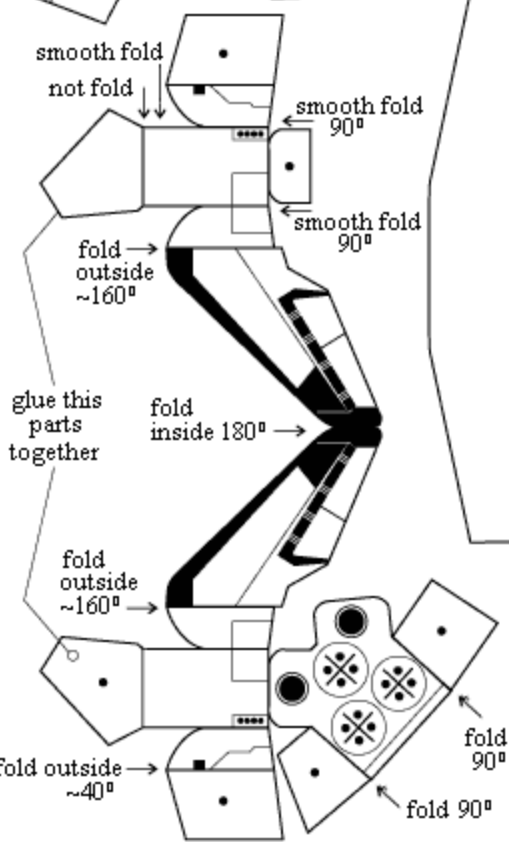
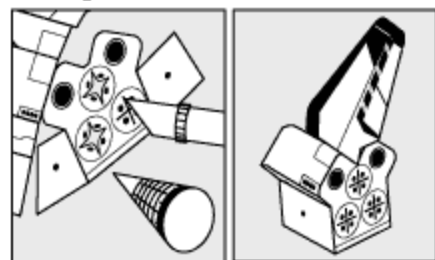
## Wheels



fold inside ~180°

fold outside 90°

## Folding instructions



smooth fold  
not fold

smooth fold 90°

smooth fold 90°

fold outside ~160°

glue this parts together

fold inside 180°

fold outside ~160°

fold outside ~40°

fold 90°

fold 90°