

**Recommended electronics:**

24gram 1300kv

10-18 amp ESC

500mah 20C 2-3 cell LiPo

(2) 9gram servos

**Throws:**

19 degrees deflection

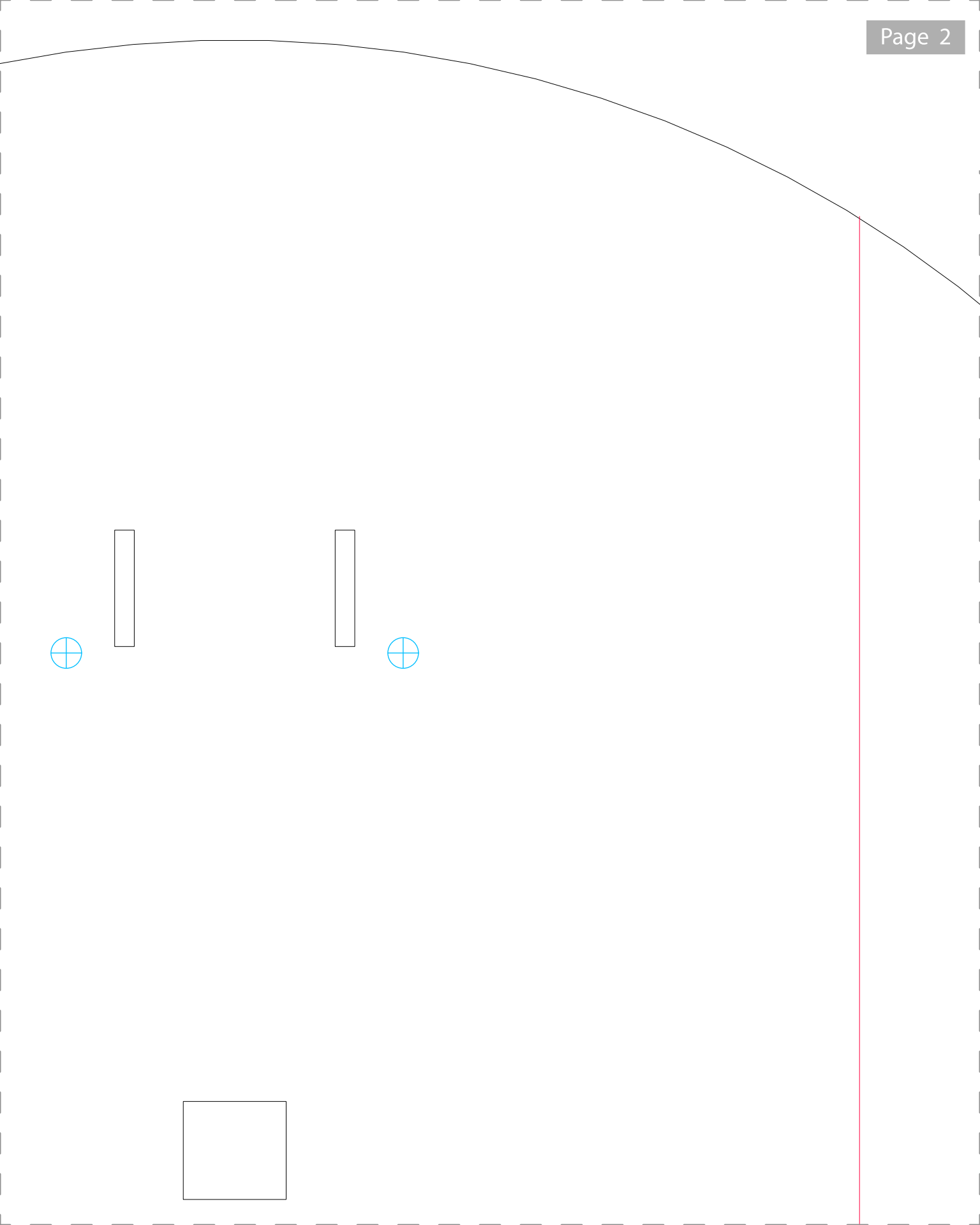
(up, down, left, right.)

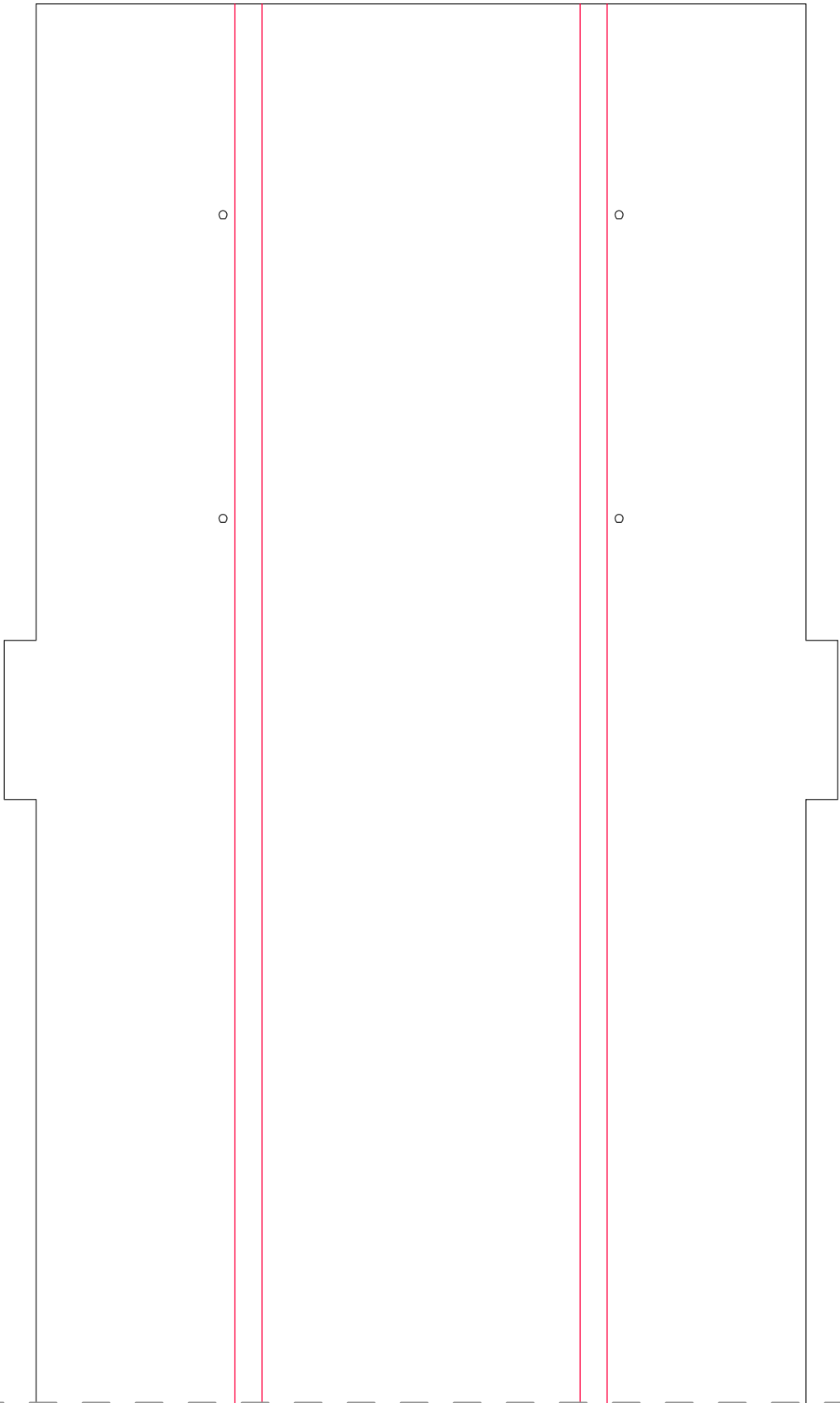
**Weight Without Battery**

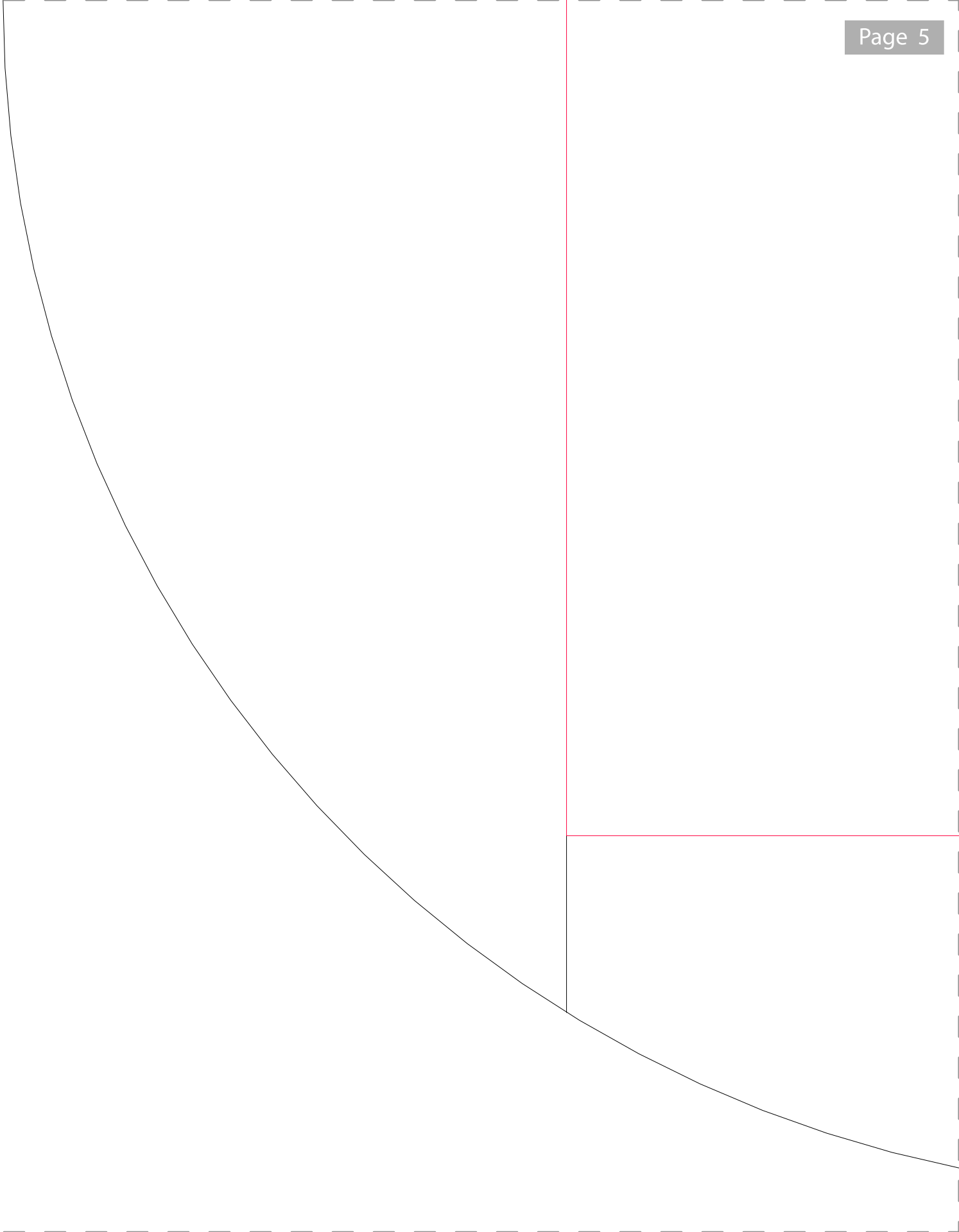
7.5 oz / 212 grams

**Prop:**

8 X 4.7 Slow Fly

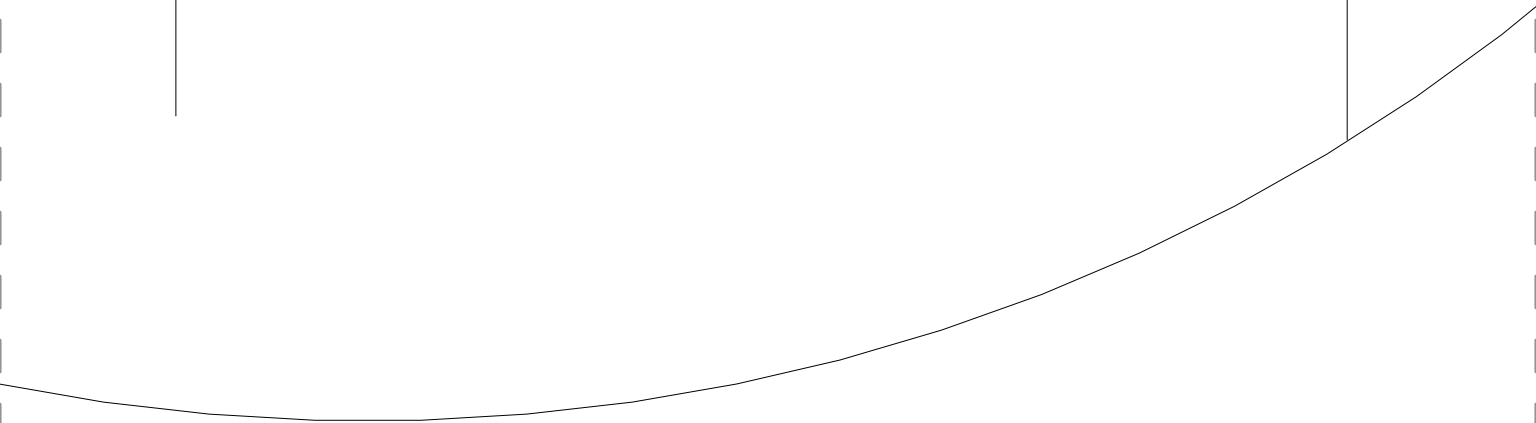


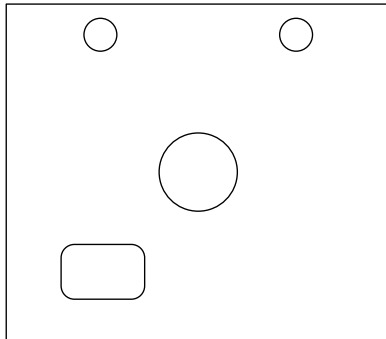
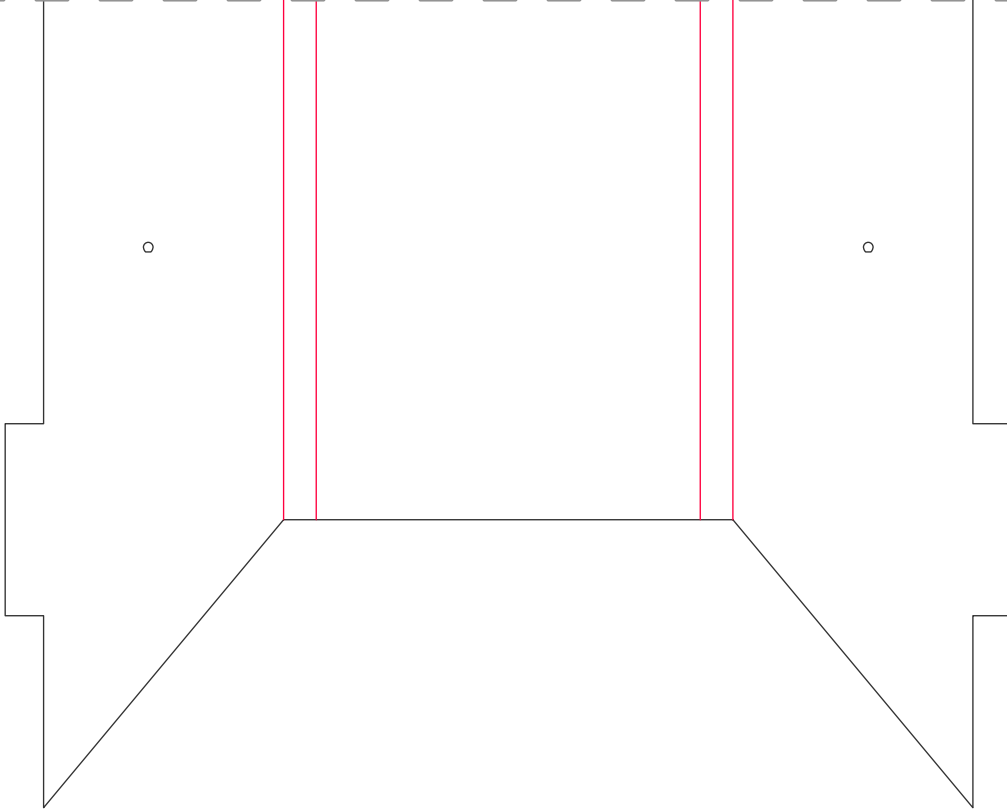




0

0





**Firewall**

**2" X 1 <sup>3</sup>/<sub>4</sub>" Inch  
(50mm X 45mm)**

**1/<sub>16</sub>" Inch thick  
(1.5mm)**

**Hobby Plywood**

