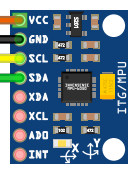


pins RFID from left to right:  
 SDA  
 SCK  
 MOSI  
 MISO  
 IRQ  
 GND  
 RSR  
 3.3V



with SPI1:  
 GPIO 16 = CE2  
 GPIO 17 = CE1  
 GPIO 18 = CE0  
 GPIO 19 = MISO  
 GPIO 20 = MOSI  
 GPIO 21 = SPCLK

SCLK = GPIO 11  
 MOSI = GPIO 10  
 MISO = GPIO 9  
 CE0 = GPIO 8  
 CE1 = GPIO 7