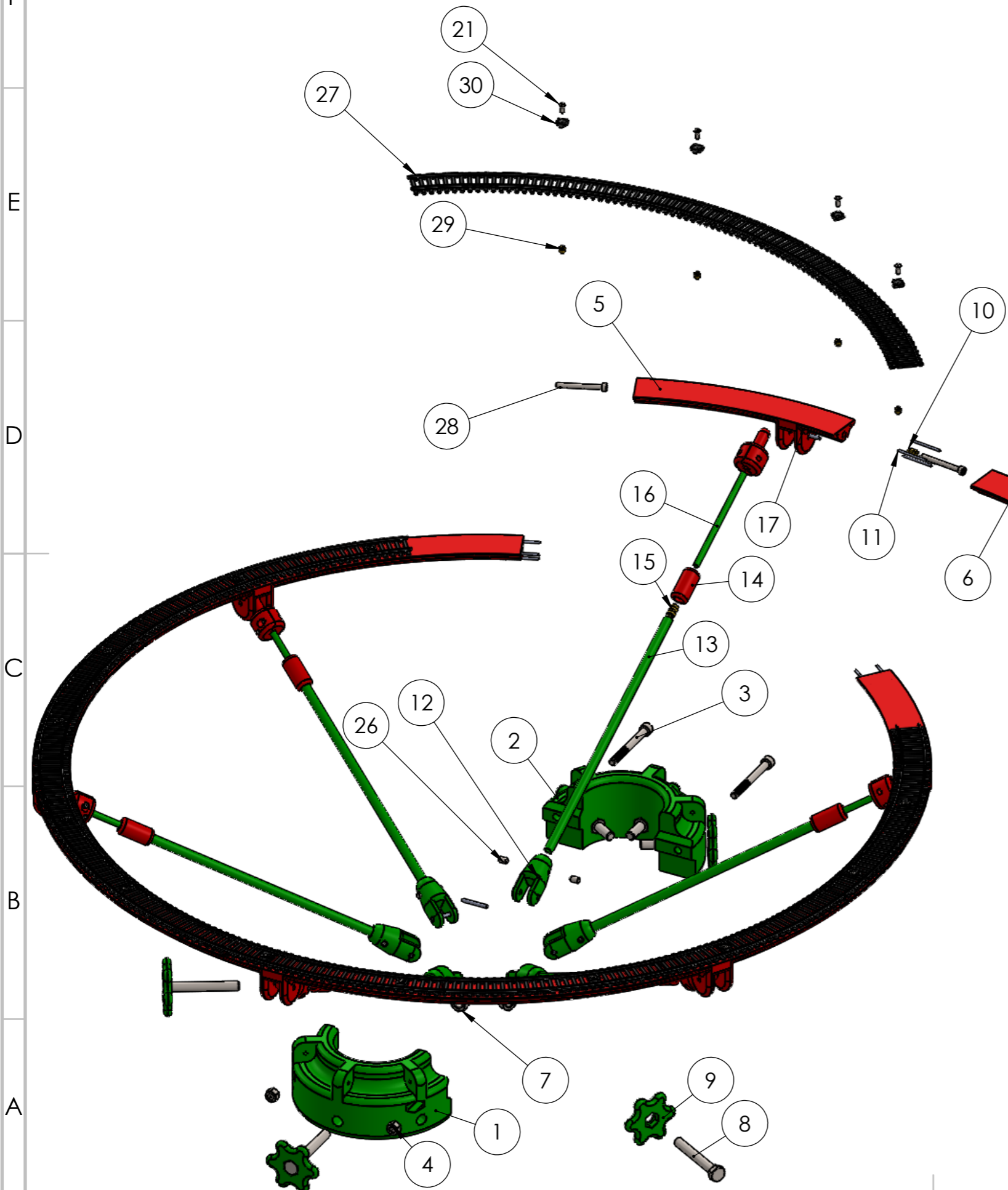


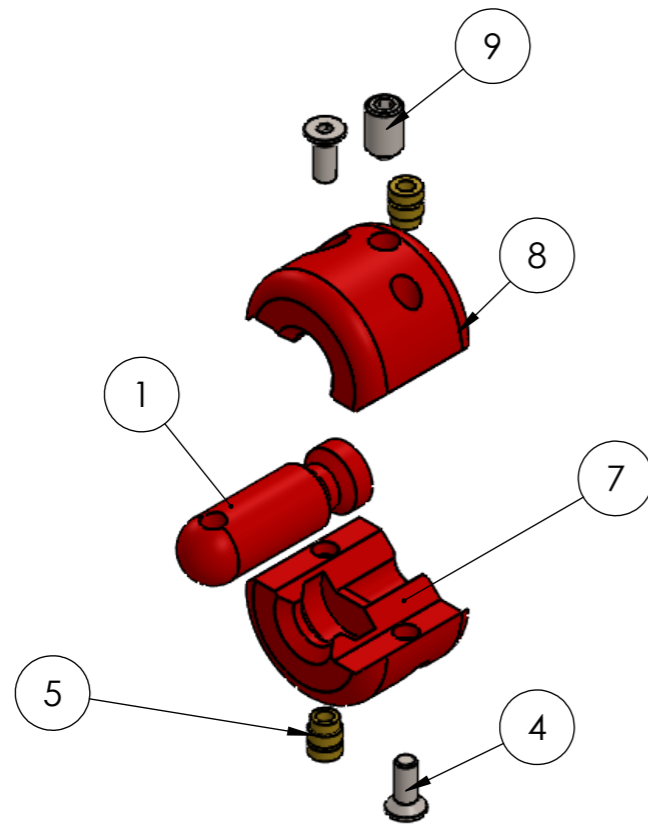
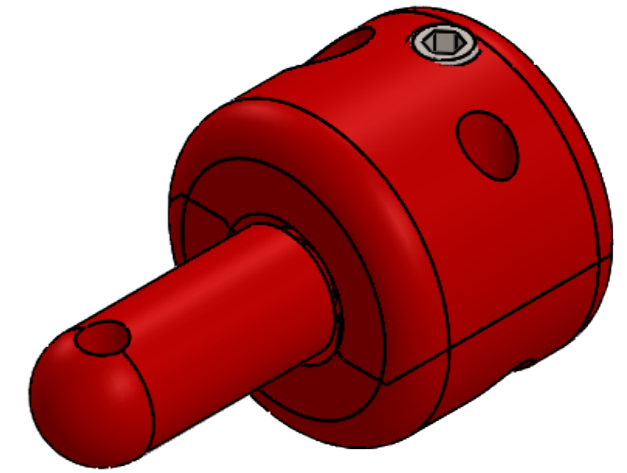
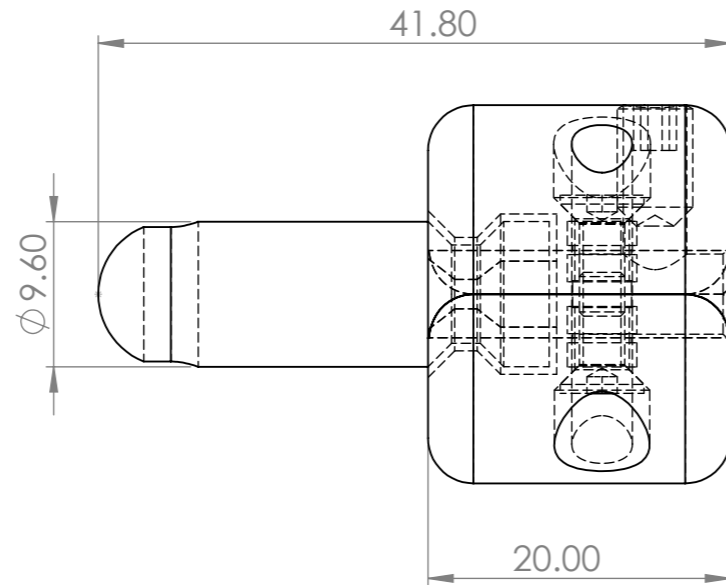
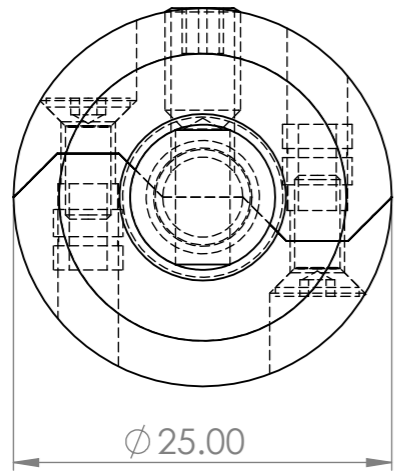
UNLESS OTHERWISE SPECIFIED: DIMENSIONS ARE IN MILLIMETERS SURFACE FINISH: TOLERANCES: LINEAR: ANGULAR:		FINISH:		DEBURR AND BREAK SHARP EDGES		DO NOT SCALE DRAWING		REVISION	
DRAWN		NAME		SIGNATURE		DATE		TITLE:	
CHK'D									
APPV'D									
MFG									
Q.A									
				MATERIAL:		DWG NO.		A8	
				WEIGHT:		SCALE:1:6		SHEET 1 OF 4	

Train In A Christmas Tree L2 (3D Printed)

Sere excel file BOM.xlsx for full BOM



ITEM NO.	PART NUMBER	DESCRIPTION	QTY.
1	Collar Split Supports 3d printed Left	3D printed part	1
2	Collar Split Supports 3d printed Right	3D printed part	1
3	ISO 4762 M6 x 60 - 24S		2
4	ISO - 4034 - M6 - S		2
5	Track frame section 2	3D Printed part, track support section with support mount	6
6	Track frame section 2 No support	3D Printed part, track support section without support mount	6
7	ISO - 4034 - M8 - N		6
8	ISO 4014 - M8 x 60 x 22-N		6
9	Knob clamping collar to tree	3D printed part What it says on the tin	6
10	M4 Brass Insert	For securing track sections together, I found the ones from CNC kitchen work best	12
11	Pin Locating Track Section 2022	1.75mm printer filament, stops sections roating	48
12	link from collar to support 2022	3D printed part complng, corrlar to support	6
13	support tube	8mm ALU tube from B&Q	6
14	Bushing tube support to threaded bar	3D printed component, to be glued to support after insertion of threaded brass insert (16)	6
15	M5 Brass Insert	I found the ones fomr CNC kitchen work best	6
16	M5 Threaded bar	from any hardware shop	6
17	pin securing^end of support assembly	3X24mm roll pin I think from local autofactors but they even turn up in LIDL the odd time for much less	12
18	topper for threaded bar MK2 design	3D printed part	6
19	Split collar for threaded rod^theaded topper mk2 design	3D printed part	6
20	Jig for grub screw hole track end of support^theaded topper mk2 design	3D printed part not show assists in the assembly of the subassembly	6
21	ISO 10642 - M3 x 8 - 8N		28

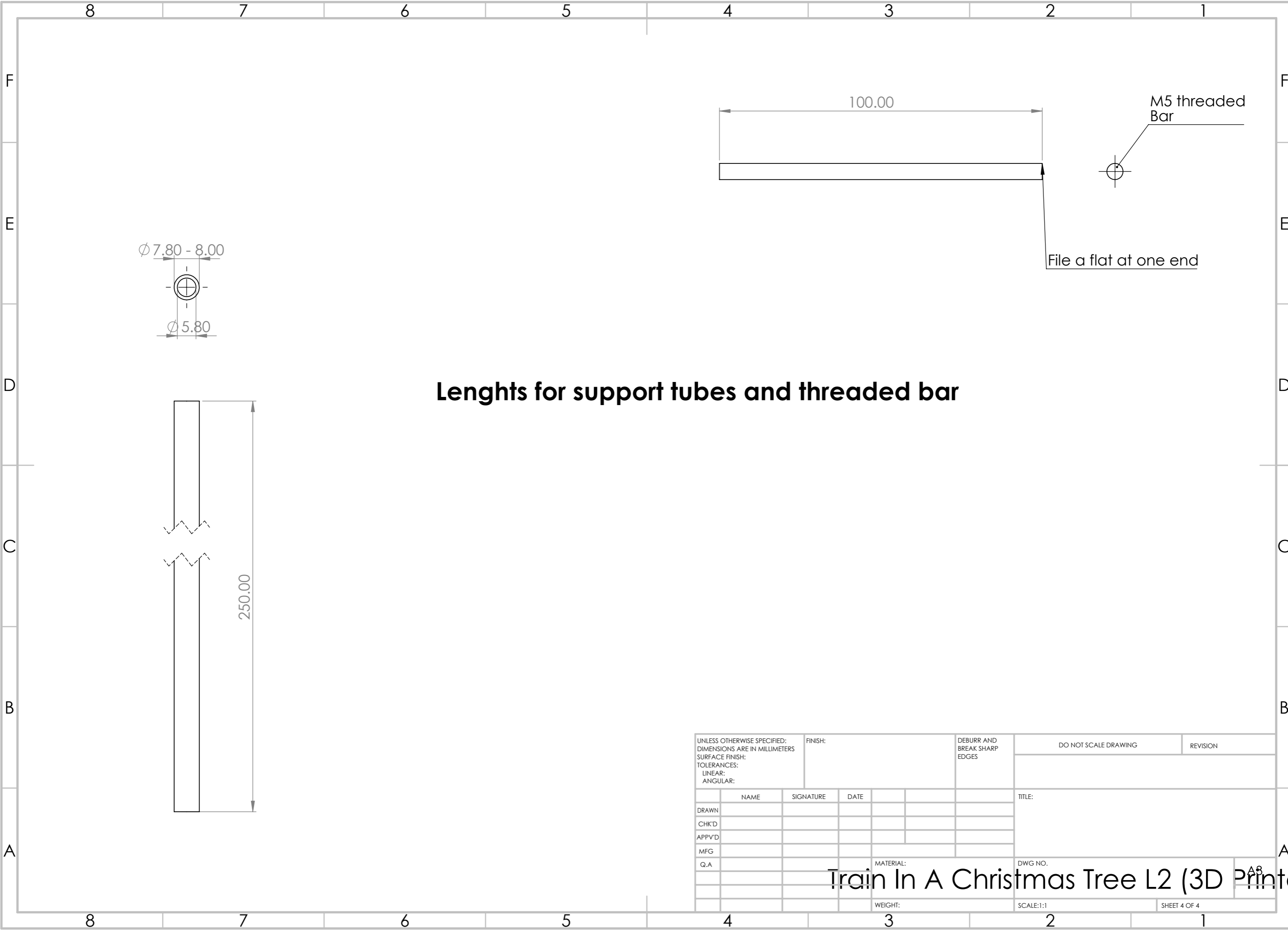


ITEM NO.	PART NUMBER	DESCRIPTION	QTY.
1	topper for threaded bar MK2 design	3D printed part	1
2	Split collar for threaded rod^theaded topper mk2 design	3D printed part	1
3	Jig for grub screw hole track end of support^theaded topper mk2 design	3D printed part not show assists in the assembly of the subassembly	1
4	ISO 10642 - M3 x 8 - 8N		2
5	M3 Threaded Insert	again from CNC kitchen	2
6	Rotatary support lenght adjuster	This the composite of 7 & 8	1
7	Rotatary support lenght adjuster Part 1	3D printed part	1
8	Rotatary support lenght adjuster Part 2	3D printed part	1
9	ISO 4029 - M5 x 8-N	grub screw to engage with a filed flat portion of the threaded bar	1

UNLESS OTHERWISE SPECIFIED: DIMENSIONS ARE IN MILLIMETERS SURFACE FINISH: TOLERANCES: LINEAR: ANGULAR:			FINISH:		DEBURR AND BREAK SHARP EDGES		DO NOT SCALE DRAWING		REVISION		
DRAWN			NAME		SIGNATURE		DATE		TITLE:		
CHK'D											
APPV'D											
MFG											
Q.A											
							MATERIAL:		DWG NO.		
							WEIGHT:		SCALE:2:1		
									SHEET 3 OF 4		

Train In A Christmas Tree L2 (3D Printed)

A8



Lengths for support tubes and threaded bar

UNLESS OTHERWISE SPECIFIED: DIMENSIONS ARE IN MILLIMETERS SURFACE FINISH: TOLERANCES: LINEAR: ANGULAR:			FINISH:		DEBURR AND BREAK SHARP EDGES		DO NOT SCALE DRAWING		REVISION		
DRAWN			NAME		SIGNATURE		DATE		TITLE:		
CHK'D											
APPV'D											
MFG											
Q.A											
									MATERIAL:		
									DWG NO.		
									SCALE:1:1		
									SHEET 4 OF 4		

Train In A Christmas Tree L2 (3D Printed)

A8